



WWW.RESTARSOLAR.COM

RT6S-M

72 Cells

Mono-crystalline

345-370W

Power output

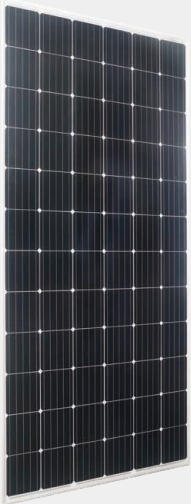
19.07%

The Highest Efficiency

0~+5W

Tolerance

RT6S-M is a robust solar module with 72 solar cells. These modules can be used for on-grid solar applications. Our meticulous design and production techniques ensure a high-yield, long-term performance for every module produced. Our rigorous quality control and in-house testing facilities guarantee Restar Solar's modules meet the highest quality standards possible. RT6S-M have five instead of three bus bars, which allows more efficient current collection and can also improve long term performance. The RT6S-M cells use a novel junction formation technology which is standard in semiconductor manufacturing. This allows for improved minority carrier lifetimes and a very tight distribution of cell performance in manufacturing. RT6S-M cells are PID free and further increase the cell efficiency allowing to increase the average module power distribution.



High module conversion efficiency (up to 19.07%), through superior manufacturing technology



Guaranteed 0~+5W positive power output tolerance ensures high reliability



Anti-reflective, hydrophobic coating improves light absorption and reduces surface dust

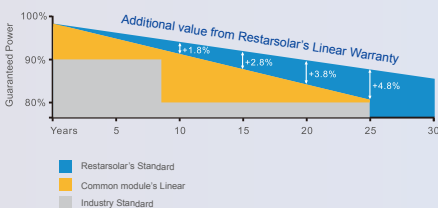


Excellent performance under low light environments (mornings, evenings and cloudy days)



Suitable for harsh environments, such as coasts, deserts and lakes. Withstand high level of wind loads (2400pa) and snow loads (5400pa)

0.5% Annual Degradation over 30 years



LINEAR PERFORMANCE WARRANTY

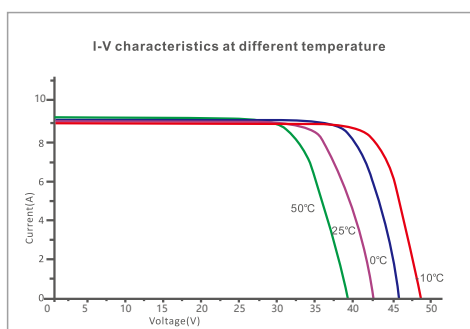
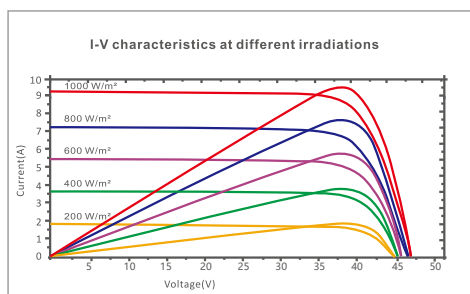
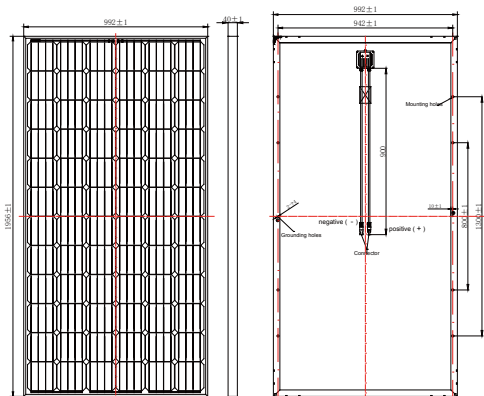
12 year Product Warranty / 30 year Linear Power Warranty

Full range of products and certification systems

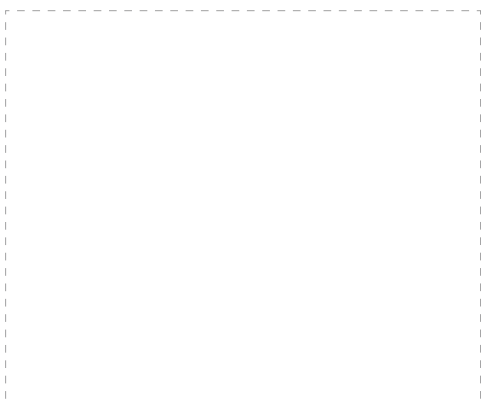
ISO 9001 TUV PID-FREE CE IEC61215/61730/61701/62716



Dimension of PV Modules Unit: mm



Partner information



ELECTRICAL DATA(STC)

Rated Power in Watts-Pmax(Wp)	345W	350W	355W	360W	365W	370W
Open Circuit Voltage-Voc(V)	46.25V	46.41V	46.85V	47.12V	48.2V	48.5V
Short Circuit Current-Isc(A)	9.58A	9.67A	9.72A	9.78A	9.84A	9.93A
Maximum Power Voltage-Vmp(V)	38.3V	38.64V	38.98V	39.31V	39.7V	39.9V
Maximum Power Current-Imp(A)	9.01A	9.06A	9.11A	9.16A	9.20A	9.28A
Module Efficiency (%)	17.78%	18.04%	18.30%	18.55%	18.81%	19.07%

STC: Irradiance 1000 W/m², Cell Temperature 25°C, Air Mass AM1.5 according to EN 60904-3.

ELECTRICAL DATA(NOCT)

Maximum Power-Pmax (Wp)	275W	279W	283W	286W	288W	290W
Open Circuit Voltage-Voc (V)	46.62V	46.79V	46.92V	47.15V	47.66V	47.79V
Short Circuit Current-Isc (A)	7.55A	7.60A	7.73A	7.77A	7.80A	7.84A
Maximum Power Voltage-Vmp(V)	38.21V	38.35V	38.46V	38.65V	38.75V	38.85V
Maximum Power Current-Imp(A)	7.20A	7.28A	7.36A	7.40A	7.43A	7.46A

NOCT: Irradiance at 800 W/m², Ambient Temperature 20°C, Wind Speed 1 m/s.

MECHANICAL DATA

Solar cells	Mono-crystalline 156 x 156mm, 5 Bus bars
Cell configuration	72 cells(6x12)
Module dimensions	1956 x 992 x 40mm(77.0 x 39.1 x 1.57in)
Weight	22KGS
Front Cover	3.2mm Tempered Glass
Frame Material	Anodized Aluminum Alloy
J-BOX	IP67
Cable	4mm ² (IEC)/12AWG(UL),900mm
Connectors	MC4 or MC4 Comparable
Standard Packaging	26pcs/pallet

TEMPERATURE & MAXIMUM RATINGS

Nominal Operating Cell Temperature (NOCT)	45°C±2°C
Temperature Coefficient of Voc	-0.32%/°C
Temperature Coefficient of Isc	0.05%/°C
Temperature Coefficient of Pmax	-0.39%/°C
Operational Temperature	-40~+85°C
Maximum System Voltage	1000V(IEC)/600V(UL)
Max Series Fuse Rating	15A
Limiting Reverse Current	15A

PACKAGING CONFIGURATION

	40HQ	20GP
Number of modules per container	696pcs	260pcs
Package	26pcs/pallet,2pcs/carton box	26pcs/pallet
Package Number	24pallets + 36carton boxes	10pallets
Package Weight	600kg/pallet,46kg/carton box	600kg/pallet
Package Dimension	1980*1120*1130mm/pallet 1980*1020*90mm/carton box	1980*1120*1130mm/pallet